



Bureau of Partnerships
Biro Kemitraan

December 10, 2021
Inbound
Semester
Exchange

Presentation for
Shibaura Institute of
Technology

Student Exchange at
Institut Teknologi Bandung
Bandung Institute of Technology





Bureau of Partnerships

Prof. Dr. Taufiq Hidayat
HEAD



Team Introduction



Alfend Rudyawan, Ph.D.
Partnership Management
HEAD OF DIVISION



Andika Putra Pratama, Ph.D.
International Partnerships
HEAD OF DIVISION



International Relations Office



Dewi Setiawati, M.T.
Strategic Partnerships



Tuti Sarah, M.A.B.
Secretariat



Dra. Indah Sintorini
Int. Student Service



Fathatus Sania Noer, S.S.
Global Mobility & Education



Eka Santi Fitri, S.E.



Dudi Saripudin



Vidya Putri G. F., S.P.W.



Ciptani Sita Permana, S.I.P.

Institut Teknologi Bandung

At a glance

Oldest technical university in Indonesia (dating back to 1920)

#303 QS World University Rankings 2022

12 Faculties and Schools + Graduate School



ITB Ganessa Campus
(Bandung)



ITB Jatinangor Campus
(Sumedang)



ITB Cirebon Campus
(Cirebon)

Location

Bandung (Main Campus)

2-hour flight from Kuala Lumpur
(Malaysia) / Singapore

2 to 4-hour drive from Jakarta
(3-4 hours by train)



Faculties / Schools

Faculty of Earth Sciences and Technology

Faculty of Mathematics and Natural Sciences

Faculty of Art and Design

Faculty of Industrial Technology

Faculty of Mechanical and Aerospace Engineering

Faculty of Civil and Environmental Engineering

Faculty of Mining and Petroleum Engineering

School of Architecture, Planning, and Policy Development

School of Business and Management

School of Pharmacy

School of Life Sciences and Technology

School of Electrical Engineering and Informatics

Courses in English

Subject to Change



Faculty of Earth Sciences and Technology

Geological
Engineering



Geodesy &
Geomatics
Engineering

Newly proposed international programs to launch in 2022
Courses pending



Faculty of Mathematics & Natural Sciences



#351-400 QS Rankings by Subject (Mathematics)

#451-500 QS Rankings by Subject (Natural Sciences)

#501-550 QS Rankings by Subject (Physics & Astronomy)

Bachelor

Scientific Communication

Photonics Theory and Applications

Synthesis and Physical Properties of Materials as well as their Functionalization

Physics

The oldest faculty of mathematics and natural sciences in Indonesia



<https://bosscha.itb.ac.id/en/>

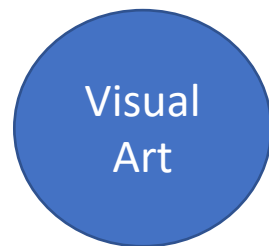
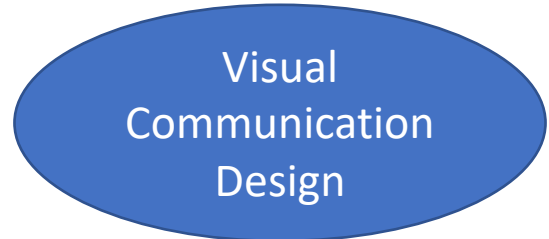
The only large observatory in Indonesia

Faculty of Art & Design

#101-150 QS Rankings by Subject (Art & Design)



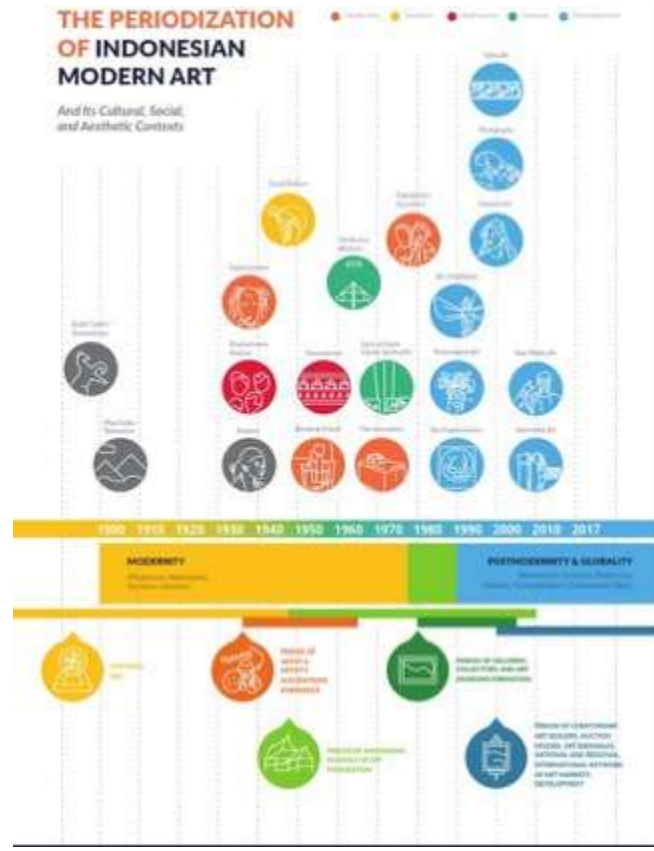
Bachelor



Visual Culture

Aesthetic II

Resist Dyeing (Batik & Tie-Dye)
Batik
Sustainable Craft



Faculty of Industrial Technology

#251-300 QS Rankings by
Subject (Engineering - Chemical)



Introduction to Chemical Engineering
Mass and Energy Balances
Chemical Engineering Thermodynamics
Chemical Engineering Mathematical Analysis
Chemical Engineering Statistics
Chemical Engineering Computation
Fluid and Particle Mechanics
Separation Process
Plant Utility Systems
Chemical Reaction Engineering II
Environmental Management in Chemical Industry
Process Equipment
Petroleum & Natural Gas Upstream Processes
Fundamentals of Process Metallurgy
Interdisciplinary Project for Chemical Engineering
Process Design
Process Performance Evaluation
Process Plant Safety
Chemical Product Design



Chemical
Engineering

Bachelor

Mechanical Engineering

Basic of Engineering Mechanics

Introduction to Mechanical Engineering

Mechanical Drawing

Introduction to Engineering Analysis

Mechanics and Strength of Materials

Kinematics and Dynamics of Machinery

Basic of Engineering Thermodynamics

Engineering Materials

Engineering Measurement

Basic of Mechanical Vibration

Mechanical Engineering Design

Basic Heat Transfer

Fluid Mechanics

Manufacturing Process

Special Topics in Mechanical Engineering

Design of Fluid System

Gas Turbines

Theory of Ground Vehicles

Piping System Design and Construction

Biomechanics

Machining Process

Testing of Machine Tool

Tooling System

Mechatronics Systems Design

Engineering Product Prototyping

Sustainability Aspects in Mechanical Engineering

Mechanical Maintenance

Mechatronics

Mechanical Installation System

Mechanical Engineering Laboratory

Manufacturing Automation System

Industrial Manufacturing Process

Aerospace Engineering

Introduction to Aerospace Engineering
Engineering Mathematics
Thermal Engineering
Kinematics and Dynamics
Aircraft Materials and Manufacturing Methods I
Mechanical Vibrations
Aerodynamics I
Aircraft Aerodynamics and Flight Performances
Lightweight Structure Analysis
Airworthiness Certification
Aircraft Systems
Aspect of Sustained Environment
Computational Aerodynamics
Special Problem in Aerodynamics and Propulsions

Flight Communication, Navigation, and Surveillance
Flight Simulation Engineering
Attitude Dynamics & Control
Avionic Systems
Special Problem in Flight Mechanics
Finite Elements Method
Aircraft Loads
Impact Mechanics
Special Problem in Lightweight Structure
Aircraft Design
Aviation System Planning
Aircraft Maintenance Engineering
Special Problem in Aircraft Operation and Maintenance

Faculty of Civil and Environmental Engineering

#151-200 QS Rankings by Subject
(Engineering – Civil & Structural)



Environmental Engineering

Physics and Chemical Treatment
Water Supply Engineering
Soil Contamination
Occupational Health
Hidrology and Hidrogeology
Environment Epidemiology
Water Quality Management
Fluid Mechanics II
Solid Waste Management
Environmental Microbiology
Air Pollution
Sustainable Sewerage and Drainage
Water Management
Environmental Engineering Management
Environmental Policy and Law
Solid Waste Treatment

Civil Engineering



Fluid Mechanics I
Environmental Statistic
Engineering Mathematics
Environmental Chemistry
Environmental Health
Biological Process Engineering
Environmental Laboratory
Hazardous Material Management

Structural Analysis I
Advanced Concrete Structures
Soil Mechanics II
Structural Analysis II
Hydropower Engineering Building
Soil Mechanics I
Foundation Engineering

Bachelor

Ocean Engineering



Waste to Energy
River, Lowland, and Lake Ecosystem

Environmental Infrastructure Engineering

Basic Random Waves
Construction Management of Ocean Structures
Boundary Element Method
Introduction to Ocean Energy
Subsea Pipeline

Water Resources Engineering & Management

Faculty of Civil and Environmental Engineering

#151-200 QS Rankings by Subject
(Engineering – Civil & Structural)

Master

- Sustainable Urban Transportation System
- Optimization in Structure Engineering
- Terminal Planning and Design
- Econometric in Transportation Engineering

Civil Engineering

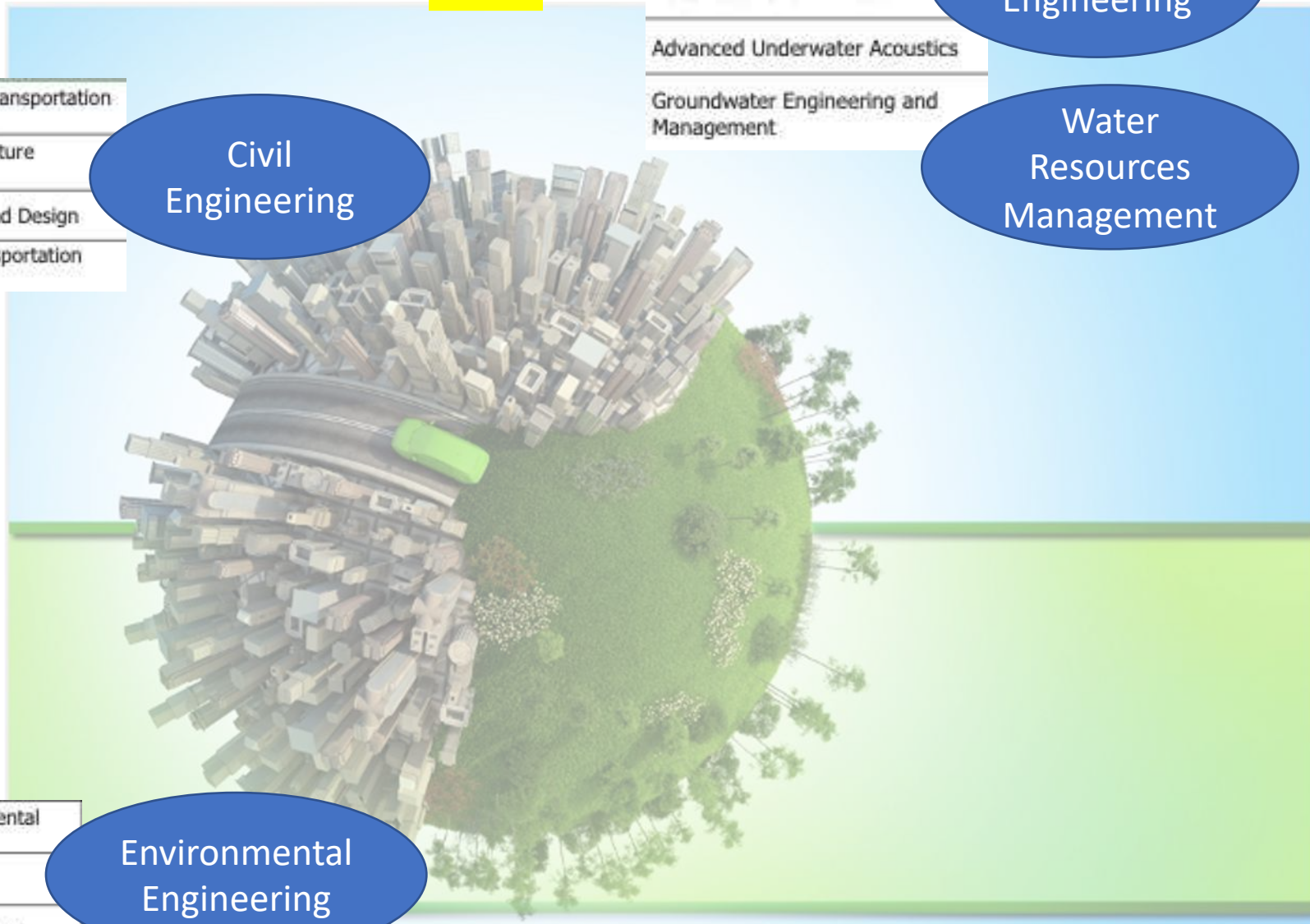
- Advanced Random Waves
- Advanced Underwater Acoustics
- Groundwater Engineering and Management

Ocean Engineering

Water Resources Management

- Fundamental of Environmental Engineering
- Waste Reuse & Recycle
- Advance Air Pollution Control

Environmental Engineering



School of Architecture, Planning, and Policy Development

#151-200 QS Rankings by Subject
(Architecture & Built Environment)

Master

Advanced Planning Analytical Methods
Environment and Resources
Spatial Economics
Urban and Regional Planning
Urban Public Finance
Urban and Regional Planning Modelling
Advanced Planning Theory 1
Development Institution and Finance
Advanced Planning Analytical Methods
Planning Studio
Rural Development

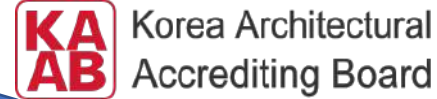
Urban & Regional Planning

Doctoral

Regional and City Theory
Environment Sustainability
Location and Space
Institutional Planning
Governance and Urban Politics
Urban Finance Seminar
Urban and Regional Modeling Seminar
Seminar on Contemporary Topics in Regional Development
Seminar on Public Policy
Spatial Econometrics Modeling
Urban Development Seminar
Land and Property Development
Seminar on Urban Development Control
Seminar on Innovation and Regional Development
Rural Development Seminar
Seminar on Regional Urbanization
Seminar on Infrastructure and Transportation System
Seminar on Conflict Management
Seminar on Disaster Mitigation and Adaptation

School of Architecture, Planning, and Policy Development

#151-200 QS Rankings by Subject
(Architecture & Built Environment)



Bachelor

Architecture

Master

Appropriate Architecture
Colonial Architecture
Practical Work
Introduction to City Architecture
Introduction to Building Information Modeling in Architecture
Green Architecture
Introduction to Real Estate

Facility Programming
Professional Ethics
Architectural Theory and Criticism
Housing and Urban
Thematic Reserach 2
Studio 2

Architecture and Technology
Digital Architecture
Research Methodology
Data Analysis
Thematic Research 1
Studio 1
Independent Studio
Local Culture and Architecture Design
Bamboo Building Technology
World Contemporary Architecture
Design in the Context of Transformation
Architecture, Development and Culture of Indonesia

School of Business and Management

#251-300 QS Rankings by Subject (Business & Management Studies)



Entrepreneurship

- Production System and Technology
- Tourism Business
- Brand Development and Management
- Sales and Marketing
- Start-up Business Practice (P)
- Technology Based Business

- Environmental Management System
- Entrepreneurship Mentoring II (P)
- Micro and Small Business
- Business Model and System Development (P)
- Communication and Business Negotiation

Bachelor

Management

- Conflict Resolution
- International Finance and Trading
- Performance Management
- Integrated Business of Asia 1
- Cross Culture and Conflict Management
- Project Management
- Bank Management and Financial Service

- Shopper Behavior
- Family Business
- Strategic Management
- Business Communication
- Compensation Management and Employee Performance
- Supply Chain Management
- Financial Planning

- Corporate Social Responsibility
- Brand Management
- Negotiations
- Marketing
- Capital Market
- Organizational Development and Learning Organization
- Enterprise Resource Planning

School of Business and Management

Business Administration

Master

Management Science

	Consumer Behavior
	Applied Marketing Research
	Supply Chain Design
Accounting	Corporate Performance Management
Marketing Management	Product Development Management
Operation Management	Social Entrepreneurship and Leadership
People in Organizations	Corporate Entrepreneurship
Financial Management	Business Plan in Property
Decision Making and Negotiations	
Business Strategy and Enterprise Modeling	
Management of Innovation, Technology and Entrepreneurship	
Business Initiation	

Quantitative Research Method
Qualitative Research Method
Management Thought and Research
Modeling in Management
Advanced Financial Planning
Financial Statement Analysis
Advanced Economics

Compensation and Managing Employee Performance
Human Capital
Leading and Managing Organizational Change
Business Leadership
Cross Cultural and Conflict Management
Corporate Risk Management
Capital Market Analysis
Investment Project Analysis
Branding and Marketing Communication



School of Pharmacy

Recognized by the Board of Pharmacy of Malaysia



Bachelor

Introduction to Pharmacy & Health

Pharmaceutical Cellular Biology

Drug Stability

Basics Pharmaceutical Analysis

Pharmaceutical Physical Chemistry

Pharmaceutical Microbiology

Drug Organic Chemistry

Pharmaceutical Botany

Basic Pharmaceutics

Human Anatomy and Physiology II

Human Anatomy and Physiology I

Food Safety Analysis

Pharmacy Chemistry Practicum

Pharmaceutical Biochemistry

Pharmacognosy

Physics Pharmacy

Pharmacology and Toxicology I

Immunology

Pharmaceutical
Sciences &
Technology

Chromatography and Electrophoresis

Radiopharmacy

Analytical Toxicology

Plant Tissue and Cell Culture, and Secondary Metabolite Biosynthesis

Pharmaceutical Polymer

Instrumental Pharmaceutical Analysis

Development & Validation of Analytical Methods

Pharmaceutical Technology of Liquid-Semisolid Dosage Forms

Pharmaceutical Biotechnology

Pharmacology and Toxicology II

Microbiology Analysis

Marine Pharmacognosy

Cosmetic Technology

Environmental Pharmacy

Bioanalysis and Biochemistry Practicum

Analytical Pharmacognosy

Pharmaceutical Technology of Solid Dosage Forms

Pharmacokinetics

Basic Pharmacotherapy

School of Pharmacy

Recognized by the Board of Pharmacy of Malaysia



Chromatography and Electrophoresis

Radiopharmacy

Analytical Toxicology

Plant Tissue and Cell Culture, and Secondary Metabolite
Biosynthesis

Pharmaceutical Polymer

Instrumental Pharmaceutical Analysis

Development & Validation of Analytical Methods

Pharmaceutical Technology of Liquid-Semisolid Dosage Forms

Pharmaceutical Biotechnology

Pharmacology and Toxicology II

Microbiology Analysis

Marine Pharmacognosy

Cosmetic Technology

Environmental Pharmacy

Bioanalysis and Biochemistry Practicum

Analytical Pharmacognosy

Pharmaceutical Technology of Solid Dosage Forms

Pharmacokinetics

Basic Pharmacotherapy

Synthesis of Drug Compounds

Veterinary Pharmacy

Crystallography

Ethnopharmacology

Pharmaceutical Statistics

Medicinal Chemistry

Phytochemistry

Biopharmacy

Communication, Drug Information and Education

Principles of the Halal Assurance System in the
Pharmaceutical Sector

Cell Therapy & Tissue Engineering

Upcoming Recombinant Therapy

Capita Selecta Pharmaceuticals

Nanopharmaceuticals

Capita Selecta Pharmaceutical Biotechnology

Pharmacy Management

Natural Material Technology

Basic Pharmaceutical Industry

Bachelor

Pharmaceutical
Sciences &
Technology

School of Pharmacy

Recognized by the Board of Pharmacy of Malaysia



Sport Physiology

Hematology

Medical Microbiology

Basic Physical Pharmacy

Epidemiology

Pharmacological and Toxicological Methods

Parasitology and Virology

Clinical Toxicology

Pharmaceutical Entrepreneurship

Practicum Clinical Biochemistry

Drug Analysis

Medical Biochemistry

Clinical Chemistry

General Pharmacognosy

Pathophysiology

Clinical &
Community
Pharmacy

Bachelor

Health Technology Assessment (HTA)

Biostatistics

Counselling and Drug Information

Basic Clinical Pharmacy

Pharmacoeconomics

International Exposure in Pharmacy

Molecular Diagnosis Clinic Application

Health Technology Assessment (CAR)

Evaluation of Efficacy and Safety of Drugs

Basics of Pharmaceutical Dosage Form Technology

Biopharmacy and Clinical Pharmacokinetics

Basics of Hospital Pharmacy

Pharmacotherapy I

Immunotherapy

Medical Nutrition Therapy

Pharmacovigilance

Pharmacogenomics

Digital Clinical Pharmacy

Disaster Mitigation in Pharmacy

Phytotherapy

Medical Biotechnology

IV Admixture

Communication and Counselling Basics

Pharmacotherapy II

School of Life Sciences and Technology

#351-400 QS Rankings by Subject (Agriculture & Forestry)

Bachelor



- Microbiology
- Biology
- Bioengineering
- Agricultural Engineering
- Forestry Engineering
- Postharvest Technology

Mycology
Biofilm and Biocorrosion
Microbiology of Aquaculture
Marine Ecology
Aquaculture
Stem Cell Biology
Principles of Bioproduct Separation
Transport Phenomena in Biosystem
Biorefinery Systems
Design of Integrated Farming
Principle of Precision Farming
E-Business for Agricultural Product
Tropical Forest Ecology
Ecosystem Service Management
Post-Harvest Processing Timber Forest Products
Production and Processing of Seaweed



Important Dates

Semester Periods

- Semester 1 (Mid-August – Mid-December)
- Semester 2 (Mid-January – Mid-May)

Nomination to ITB Admission: <https://admission.itb.ac.id/home/student-exchange#>

- March 31 (Semester 1) + Application
- August 31 (Semester 2) + Application

Visa Process

- May – July (Semester 1)
- October – December (Semester 2)

International Virtual Courses Summer Courses

<https://admission.itb.ac.id/home/summer-courses>



Health Protocols

Vaccination

PCR

Quarantine

Surrounded by mountains



City Center



Asia-Africa Street

About BANDUNG

3rd Largest City in Indonesia

City of Food and Fashion

Higher Altitude (768 m above sea level)

Temperature around 11 – 34°C

Part of UNESCO Creative Cities Network

Braga Street







Bosscha Observatory

Contact us
(iro@itb.ac.id)