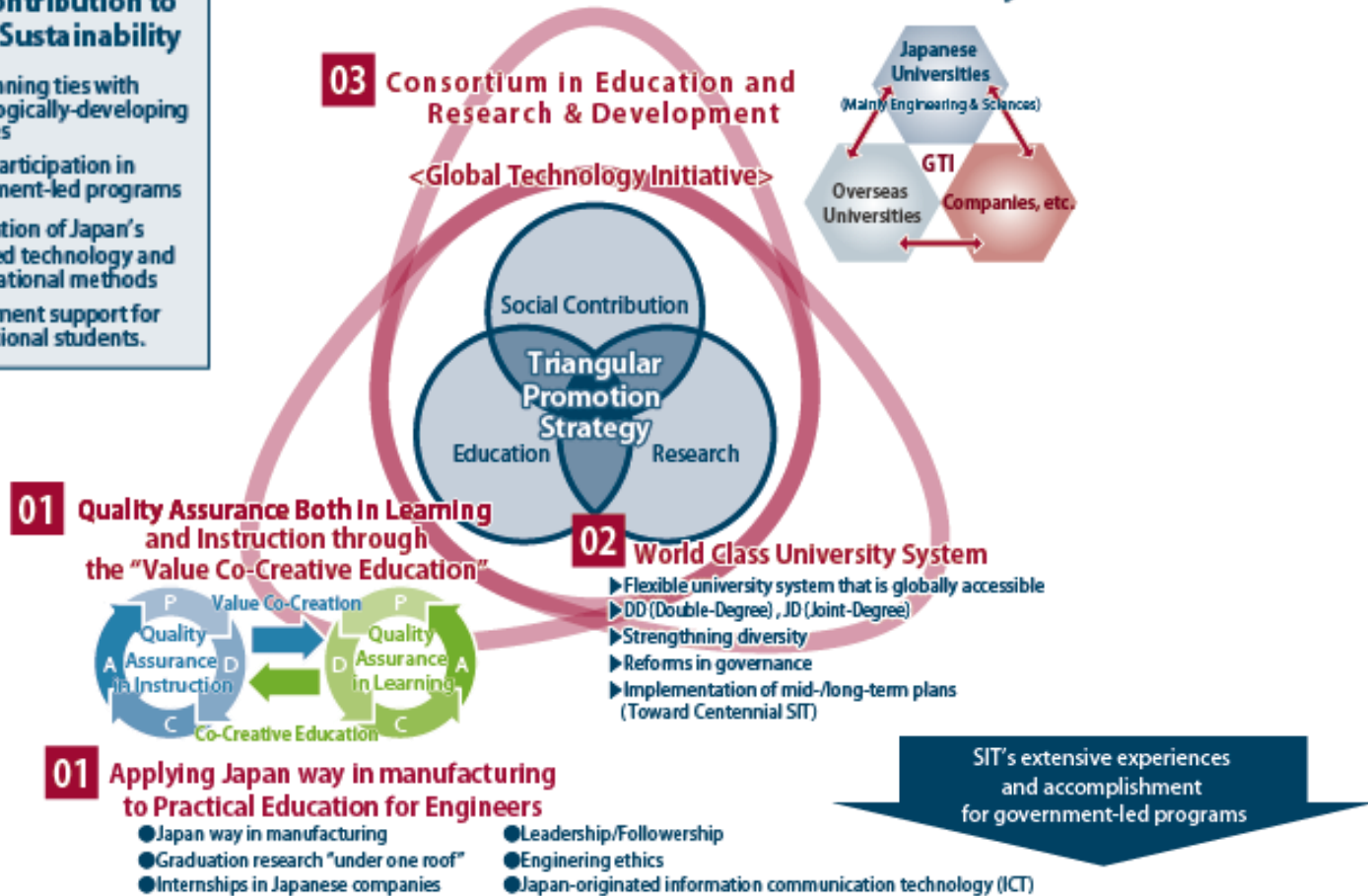


Overview of SIT's Top Global University Project

Design and Implementation of a Human Resource Development Model for Engineering and Sciences focusing on Value Co-Creative Education

Contribution to Global Sustainability

- SIT's Contribution to Global Sustainability**
- Strengthening ties with technologically-developing countries
 - Active participation in government-led programs
 - Propagation of Japan's advanced technology and its educational methods
 - Employment support for international students.



Penetration of "Shibaura Model" into domestic and overseas universities